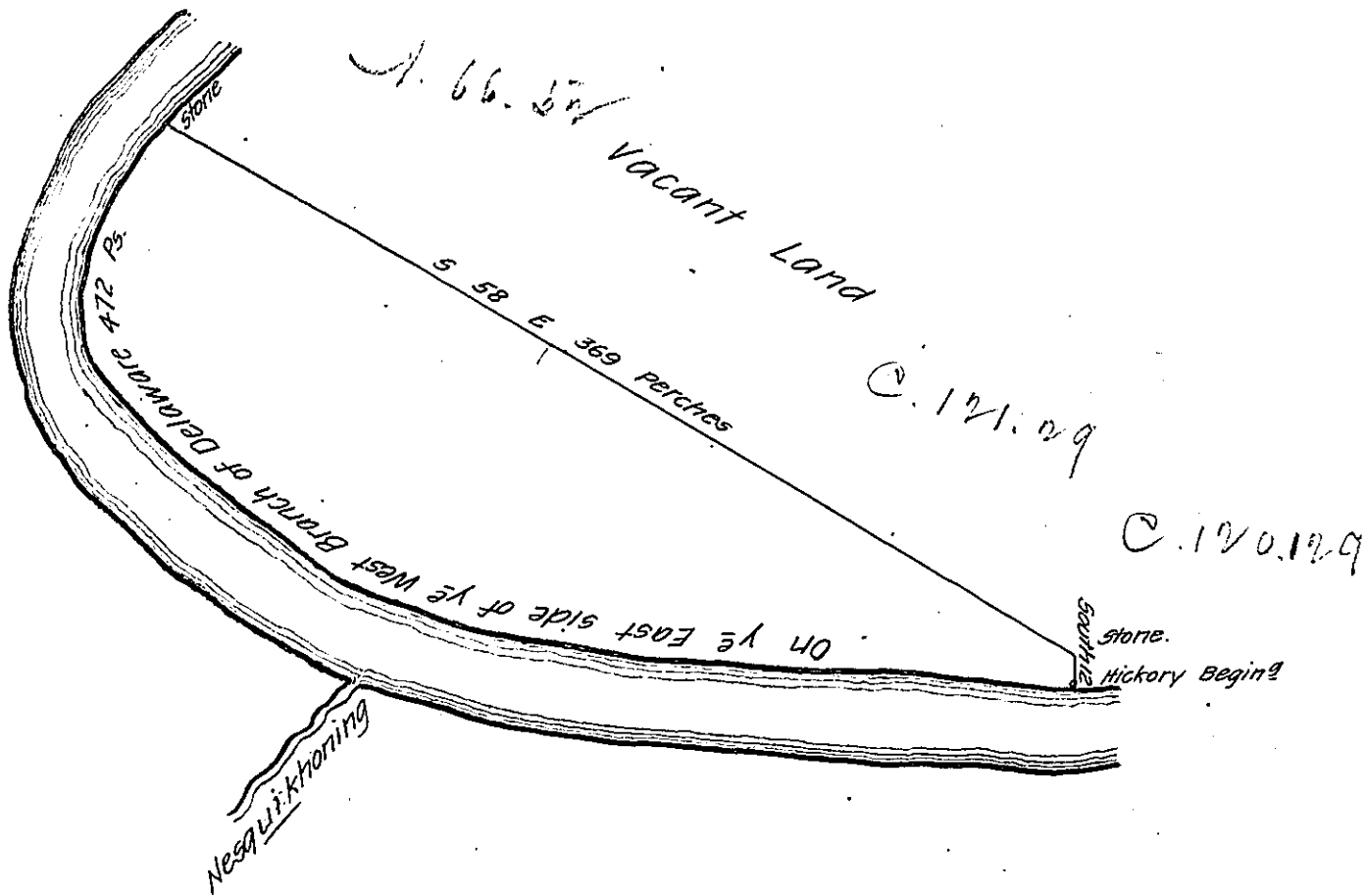
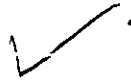


(E.) Mauch Chunk
CARBON.



By Virtue of a Warrant dated the ye 28th day of February 1774 and Surveyed the 23^d day of June 1774 to Peter Wickoff the above described tract of land Situate on ye East side of the West Branch of Delaware opposite the mouth of Nesquikhoning creek in ye County of Northampton containing One hundred & Sixty seven Acres and a Quarter of an Acre with ye Allowance of Six P. Cent &c^o

N 84 W 180 }
 N 74 W 70 } bearing & Distance up River
 N 48 1/2 W 128 }
 North 40 }
 N 30 E 50 }
 N 63 E 4 }

P.-

Geo. Palmer D.S.

To John Lukens Esq^r

Surveyor General.

IN TESTIMONY that the above is a copy of the original remaining on file in the Department of Internal Affairs of Pennsylvania, made conformably to an Act of Assembly approved the 16th day of February, 1833, I have hereunto set my Hand and caused the Seal of said Department to be affixed at Harrisburg, this fourth day of June 1907

Henry Houchens
Secretary of Internal Affairs.